

Prime Commercial

AUCTION

Wed, Feb.6 at 3 PM



Frontage on Homestead Dr



Signaled Intersection



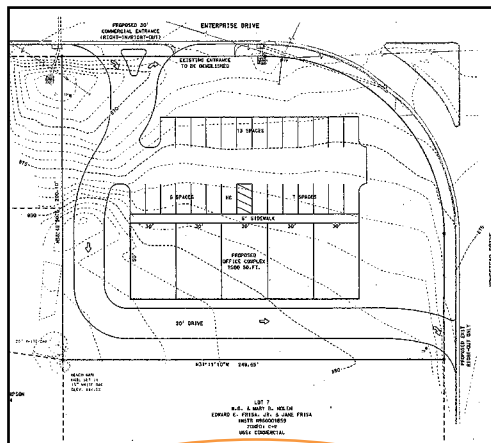
Frontage on Enterprise Dr

SALE SITE: WYNDHURST MEETING PLACE • 105B TRADEWYND DR • LYNCHBURG, VA

Prime location just off US-221 at the corner of Enterprise Dr. and Homestead Dr.

- 1.08± acres being Bedford County Parcel 118-1-6
- Zoned C-2 General Commercial
- Ideal for a variety of commercial uses including office, retail, restaurants, and automobile sales
- Convenient to Wyndhurst and US-221
- Nearby businesses include Walgreens, Blue Ridge Floors, Seckman Printing, and numerous professional offices including medical, dental, law, and real estate.
- Traffic count of 19,000 vehicles per day on Enterprise Dr (2017 VDOT)
- Preliminary site plan on file

Details and photo gallery at TRFAuctions.com



Self-guided tours ok anytime or stop by our nearby office located at 101 Annjo Ct for information. An agent has been reserved on the following dates to answer questions:

- Wed, Jan.16 from 12-1PM
- Wed, Jan.23 from 12-1PM
- Wed, Jan.30 from 12-1PM
- Or call us at 434-847-7741 to arrange a private tour!

DIRECTIONS TO PROPERTY

- From Lynchburg Expressway, take US-221S 3mi to LEFT on Enterprise Dr. Property on right at first stop light (intersection of Enterprise and Homestead).
- From Timberlake Rd, take Laxton Rd (Brookville High School) 1/2mi to RIGHT on Enterprise Dr. 1.5mi to property on left (signaled intersection of Enterprise and Homestead)

REAL ESTATE AGENTS: 2% Commission Available
Call or visit our website for form.

REAL ESTATE TERMS: 10% deposit day of sale by cash or check. Balance on or about 30 days. 5% buyer's premium. Full terms online.



101 Annjo Court
Forest, VA 24551
info@trfauctions.com

WWW.TRFAUCTIONS.COM

Sale Site Phones for Auction Day
434.660.5159 | 434.610.3182 | 434.610.2597

For more information, call

(434) 847-7741